

# WELCOME



**HIGHWAY 22**  
FUNCTIONAL STUDY  
**UPDATE**

## PUBLIC OPEN HOUSE

WE ARE HERE TODAY TO:



**Share** information about the Highway 22 Study Update



**Collect** feedback on the draft concept



**Respond** to questions, comments and ideas

Following your review of the information shared today, please complete the feedback form or visit our website to complete an online survey.



[www.Hwy22Update.com](http://www.Hwy22Update.com)



# INTRODUCTION



## BACKGROUND

In 2003, the Highway 22 and Highway 1A Access Management & Functional Planning Study (The Study) was approved by Alberta Transportation, setting a 20-year horizon for the future of the two primary highways. The Study confirmed the long-range function, classification and design standards for both highways and determined future configurations, Right-of-Way (ROW) requirements, and an Access Management Strategy for the corridors.

## CURRENT SITUATION

At the request of Alberta Transportation, Watt Consulting Group is leading an update to the Study for a portion of Highway 22; from south of the Bow River to the future Township Road 254, just south of the Town of Cochrane limits. The Study update will align with the direction set out in Connecting Cochrane, the Town of Cochrane's Transportation Master Plan and will help guide future decisions on development, road network planning and highway improvements along this segment of Highway 22, with a primary focus on highway access and intersection improvements.

**The Highway 22 Functional Study Update includes a public engagement process to ensure adjacent landowners and all community members are informed of the proposed changes and have the opportunity to provide feedback to the project team.**



# STUDY AREA



## HIGHWAY 22 FUNCTIONAL STUDY UPDATE





# PROJECT HISTORY



## 2003

### Highway 22 and Highway 1A Access Management & Functional Planning Study approved by Alberta Transportation

- Provides a 20-year horizon for the future of the two primary highways
- Includes the long-range function, classification and design standards for both highways
- Includes future configurations, Right-of-Way (ROW) requirements, and an Access Management Strategy



## November 2017

### Connecting Cochrane (Transportation Master Plan) adopted by the Town of Cochrane

- Includes transportation considerations for the short and long-term
- Answers the question “What is important and what should be considered as the Town grows to a population of 60,000 people?”
- Developed through a five-phase process, including technical analysis, forecasting based on projected growth and public consultation
- Recommended upgrades to the following intersections along Highway 22:
  1. Rolling Range Drive
  2. James Walker Trail
  3. New connection to the future Southbow neighbourhood



## Current

### Highway 22 and Highway 1A Access Management & Functional Planning Study Update

*\*For the portion of Highway 22 south of the Bow River to the future Township Road 254*

- Will align with Connecting Cochrane
- Will provide recommendations on short, medium and long-term improvements within the Study Area
- Will include technical analysis, public consultation, and review by the Town of Cochrane and Alberta Transportation



# PROJECT PROCESS



- Data Collection & Review  
**October 2021**

- Concept Design  
**November 2021**

- Public Engagement  
**December 2021 (we are here)**

- Concept Refinement  
**January 2022**
  1. Stormwater Management Plan
  2. Detailed Traffic and Safety Analysis
  3. Final Evaluation and Assessment

- Final Report  
**February 2022**



**PROJECT  
DECISIONS**

## Technical Analysis

- Traffic forecasting
- Traffic safety assessment
- Capacity analysis
- Development of alignment options
- Utility impacts

## Coordination with

- Alberta Transportation
- Town of Cochrane
- Rocky View County

## Standards, Guidelines & Best Practices

## Cost Analysis

## Public & Stakeholder Engagement



# CONNECTING COCHRANE



## THE TOWN OF COCHRANE'S TRANSPORTATION MASTER PLAN

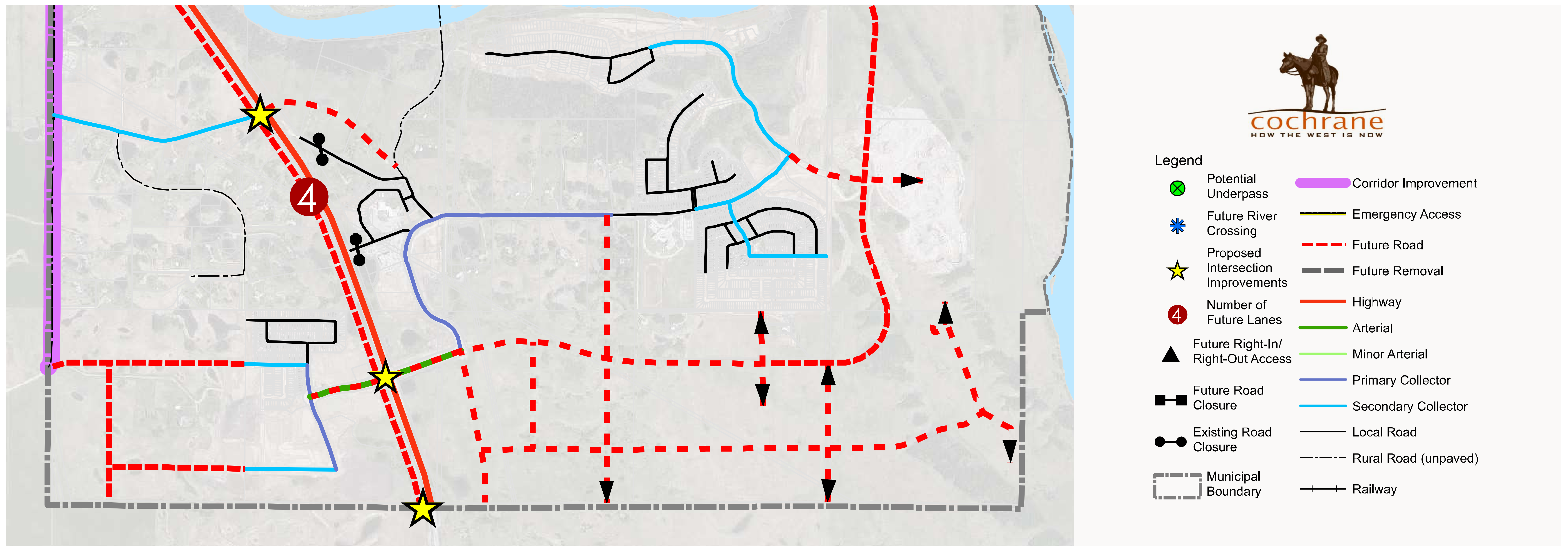


### POPULATION GROWTH

Over the next 43 years (2060), the annual growth rate is expected to remain steady between 2-4% per year. With this anticipated growth rate, the community's population can be expected to more than triple to over 60,000 people by 2060. The expected growth and development will create a significant need to manage the existing transportation system and to determine what Connecting Cochrane Town of Cochrane Page 9 improvements or mitigated measures on the transportation network would need to be completed to accommodate the anticipated growth.



# CONNECTING COCHRANE



## DESTINATIONS & TRAVEL PATTERNS

Highway 1A and Highway 22 are the highest volume roadways in Cochrane and the results of public consultation indicate that congestion on the highways is a concern for residents.

## HIGHWAY CONNECTIONS & CROSSINGS

Good connections are critical to the success of new development and for the Town. Two connections south of the Bow River are recommended to provide access to new development in south Cochrane:

- Rolling Range Drive intersection is recommended to become a full movement intersection with a new east approach to connect to River Heights Lane within an undetermined alignment.
- New intersection associated with the Southbow community in south Cochrane.



# OVERVIEW OF CHANGES



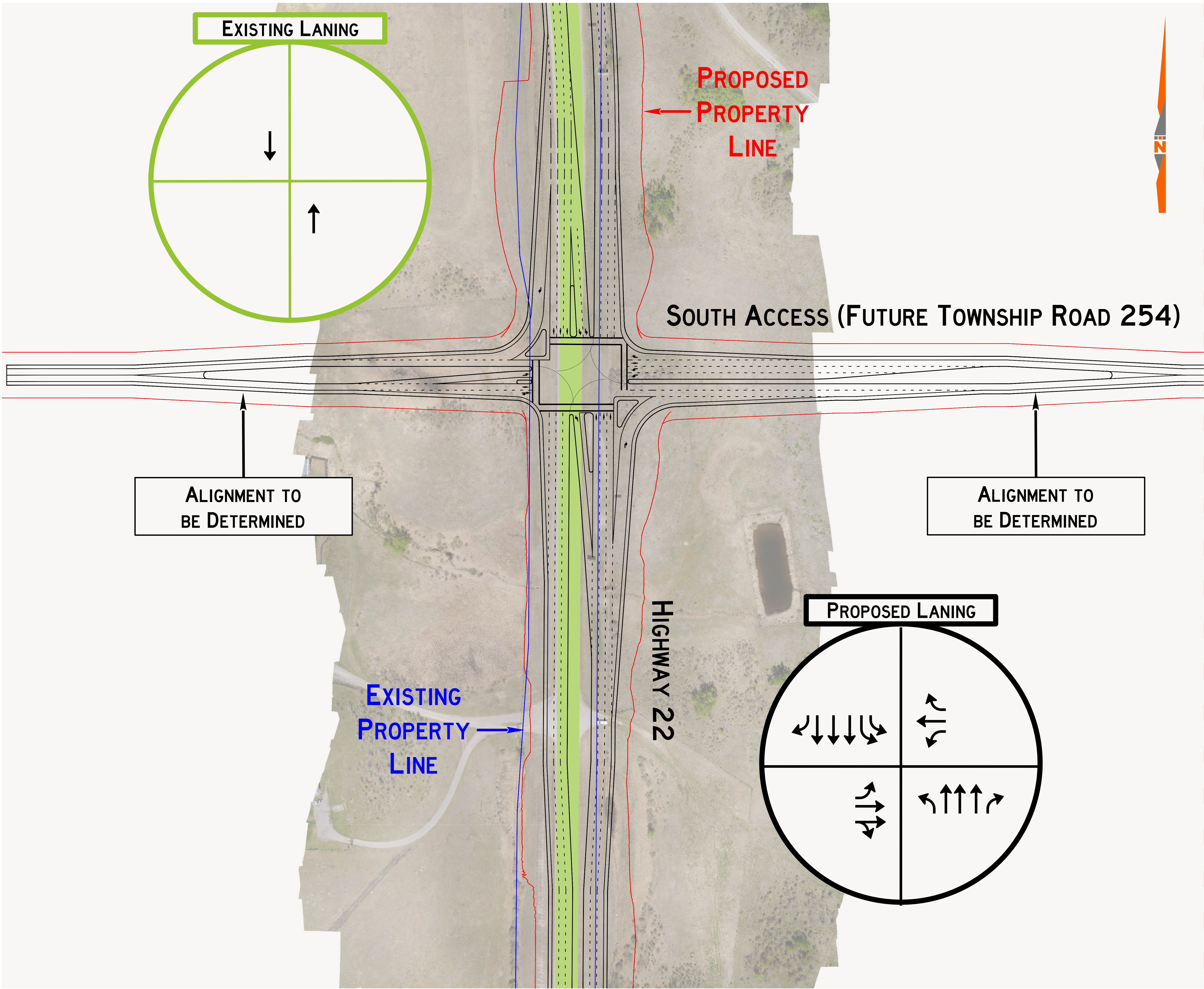
The following is a comparison of the original 2003 Highway 22 and Highway 1A Access Management & Functional Planning Study and what is proposed within the current Study Update.

2003 Study Results	Not Changing	Proposed Changes
Highway widening south of Griffin Road	X	
Right-of-way protection for future widening	X	
Access consolidation	Creating a new intersection associated with the Southbow community in south Cochrane.	New access introduced at Rolling Range Drive.
Staging of improvements	X	
Protect ROW for future six-lane cross-section	X	
Reconstruct bridge over Bow River to the east	X	
Horizontal and vertical alignments		Slight modifications to accommodate a new intersection at Rolling Range Drive and to balance earthworks.
ROW requirements		Slight modifications to accommodate an additional intersection at Rolling Range Drive.



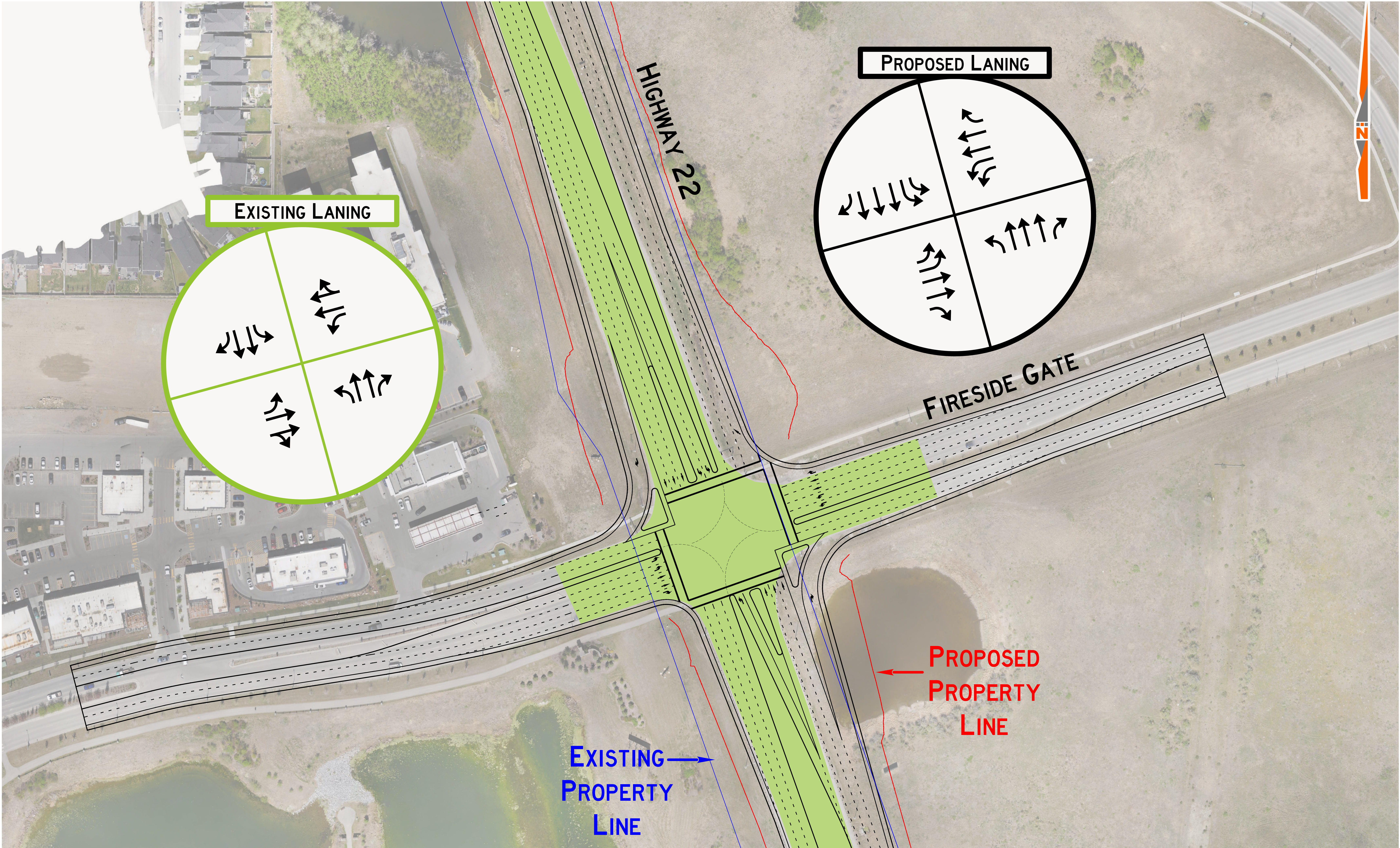


**DRAFT CONCEPT**  
HIGHWAY 22 AND SOUTH ACCESS



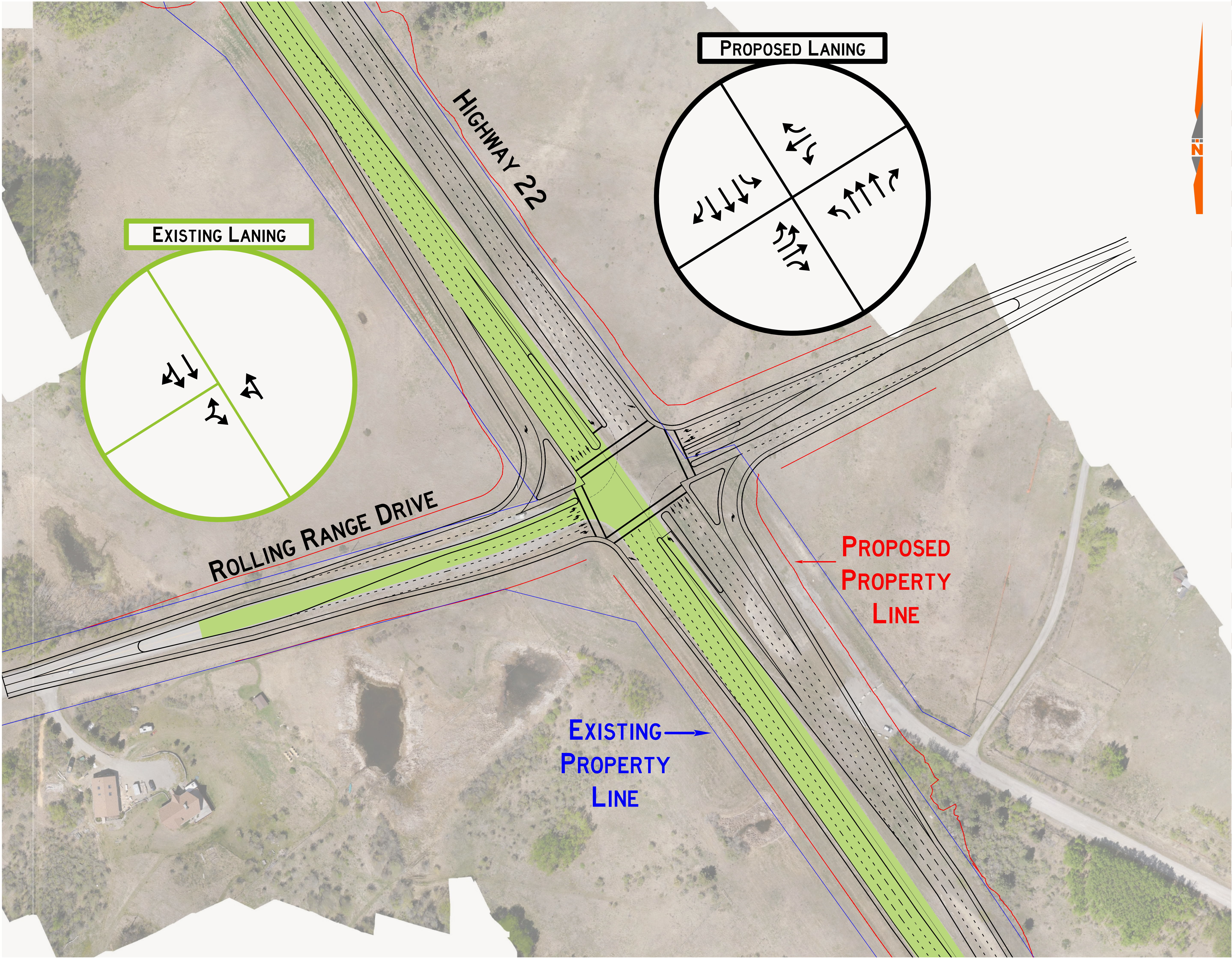


**DRAFT CONCEPT**  
HIGHWAY 22 AND FIRESIDE GATE





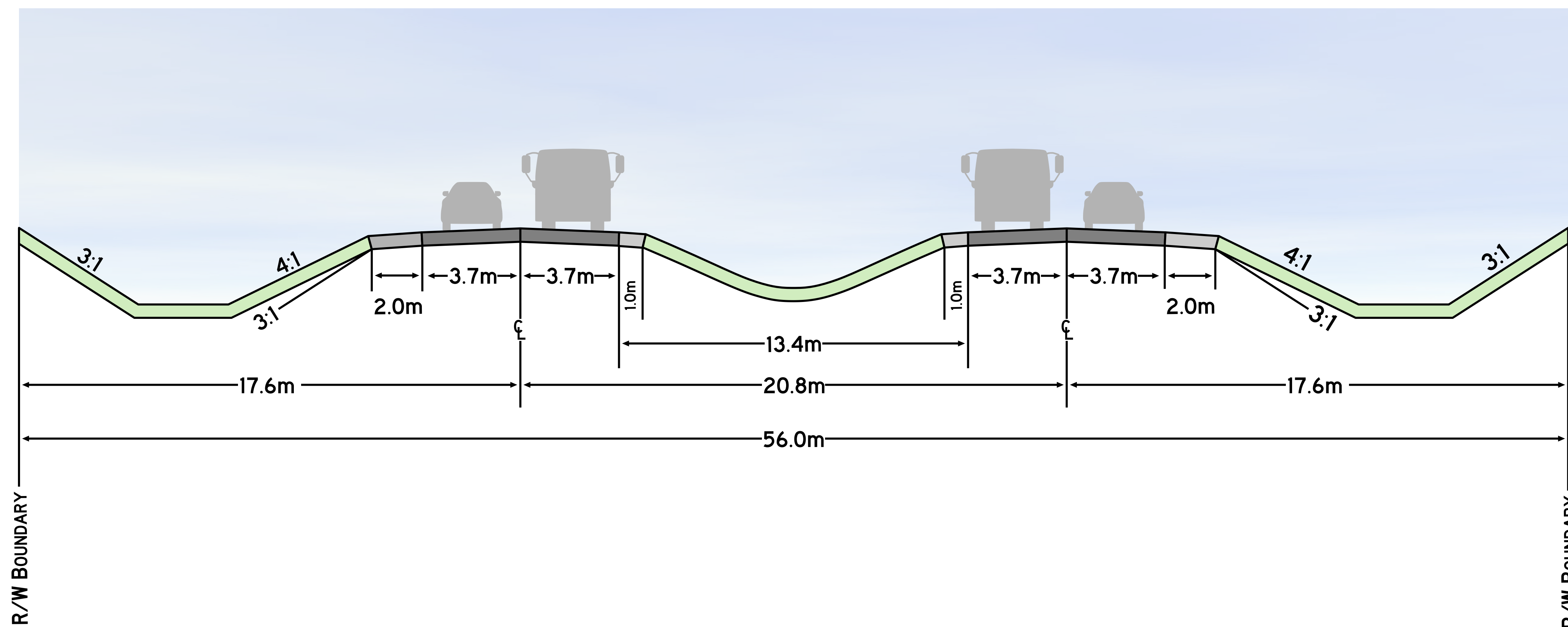
**DRAFT CONCEPT**  
HIGHWAY 22 AND ROLLING RANGE DRIVE



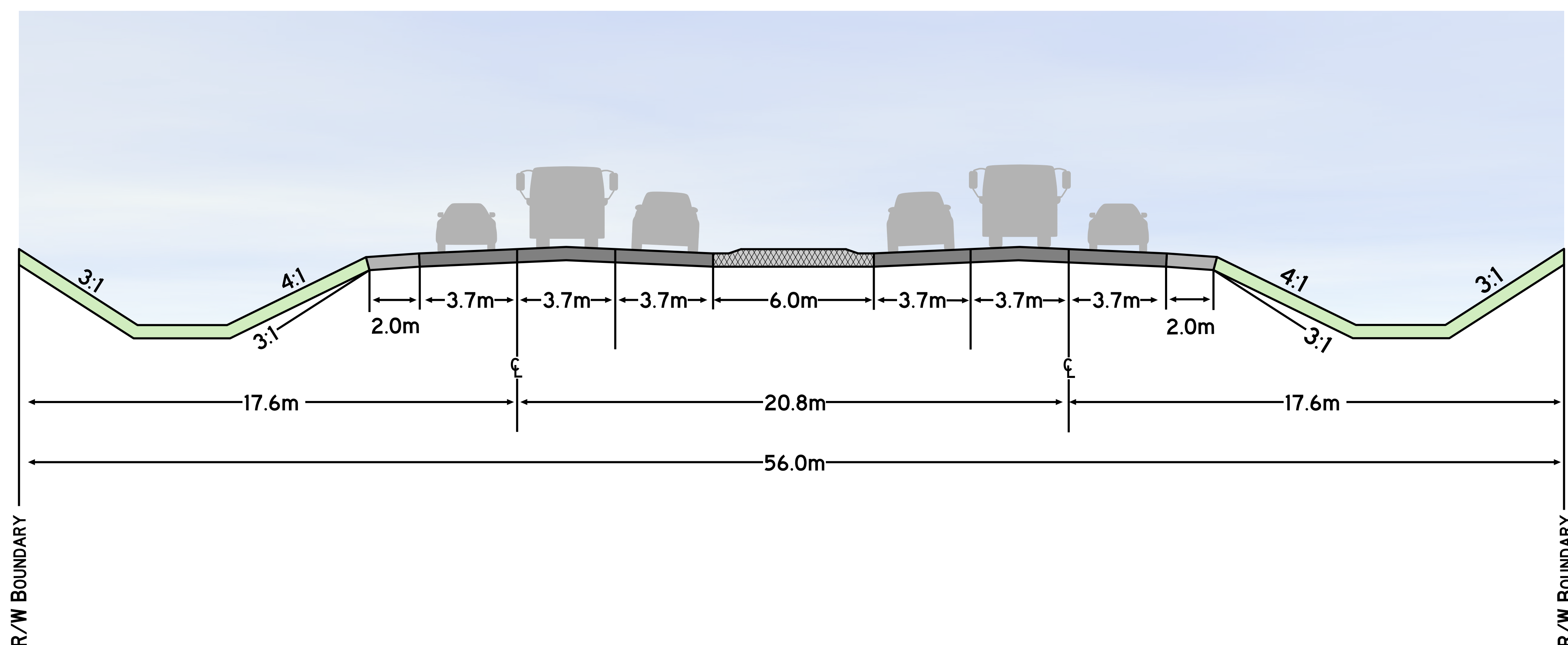


# PHASING/STAGING PLAN

## STAGE 1 CROSS-SECTION



## ULTIMATE CROSS-SECTION



- The plans accommodate the projected 2060 traffic volumes.
- Construction of the upgraded corridor may be staged over time depending on the pace of growth in the area and provincial funding.
- A conceptual first stage of development may include widening to a four-lane cross-section.
- As traffic demand increases and development in the area continues, the 5th and 6th lanes may be constructed.
- Intersection upgrades along the corridor will be tied to specific development phases and will be required as a condition of approval.



# FREQUENTLY ASKED QUESTIONS



## WHY ARE THESE CHANGES REQUIRED?

Since the previous study in 2003, the Town has annexed lands on the east and west sides of Highway 22. The traffic associated with the future development of these lands was not accounted for in the previous functional study and therefore an update is required to ensure Highway 22 can accommodate the anticipated regional and local traffic along the corridor. Alberta Transportation has requested for the study to be updated to align with the Town's Transportation Master Plan, Connecting Cochrane.

## WHEN ARE THE HIGHWAY 22 IMPROVEMENTS GOING TO TAKE PLACE?

The timing of improvements are subject to provincial funding. The province's next capital plan will be released next spring, at which time we will have a better understanding of when improvements are expected.

## WHO IS FUNDING THE HIGHWAY 22 FUNCTIONAL STUDY UPDATE?

Canopy Lands is a real estate asset management and development arm of Schickedanz Group, working on the Rolling Trails Area Redevelopment Plan (ARP) south of Cochrane on the west side of Hwy 22, north of Fireside. Through the Town's circulation of the ARP, Alberta Transportation requested an update to the Highway 22 and Highway 1A Access Management & Functional Planning Study (2003) for a portion of Highway 22; from south of the Bow River to the future Township Road 254 within Rocky View County. Canopy Lands is committed to investing in and supporting the future improvements to the transportation network in south Cochrane, and is willingly funding the Study Update.



# THANK YOU



## Thank you for joining us.



Complete a feedback form before you leave.

.....



Complete the online survey at **[www.Hwy22Update.com](http://www.Hwy22Update.com)**.

.....



A What We Heard Report will be posted on the project website and emailed to subscribers.

.....



For questions please contact  
**Tamille Beynon**, Engagement Representative  
403-692-5234 • [Hwy22Update@gmail.com](mailto:Hwy22Update@gmail.com)

For more Information visit **[www.Hwy22Update.com](http://www.Hwy22Update.com)**